

1999  
30-5815-000-0816 / CLIV20160079



SW207TH AVE

SW205TH AVE

SW136TH ST



SCALE: 1 inch = 149 feet

2001  
30-5815-000-0816 / CLIV20160079



SW207TH AVE

SW205TH AVE

SW136TH ST



SCALE: 1 inch = 149 feet

2003  
30-5815-000-0816 / CLIV20160079



SW136TH ST

SW207TH AVE

SW205TH AVE



SCALE: 1 inch = 149 feet

2004  
30-5815-000-0816 / CLIV20160079



SW 136TH ST

SW 207TH AVE

SW 205TH AVE



SCALE: 1 inch = 149 feet

2005  
30-5815-000-0816 / CLIV20160079



SCALE: 1 inch = 149 feet

2006  
30-5815-000-0816 / CLIV20160079



SW 207TH AVE

SW 205TH AVE

SW 136TH ST



SCALE: 1 inch = 149 feet

2007  
30-5815-000-0816 / CLIV20160079



SW136TH ST

SW207TH AVE

SW205TH AVE



SCALE: 1 inch = 149 feet

2008  
30-5815-000-0816 / CLIV20160079



SW136TH ST

SW207TH AVE

SW205TH AVE



SCALE: 1 inch = 149 feet

2009  
30-5815-000-0816 / CLIV20160079



SW136TH ST

SW207TH AVE

SW205TH AVE



SCALE: 1 inch = 149 feet

2010  
30-5815-000-0816 / CLIV20160079



SW136TH ST

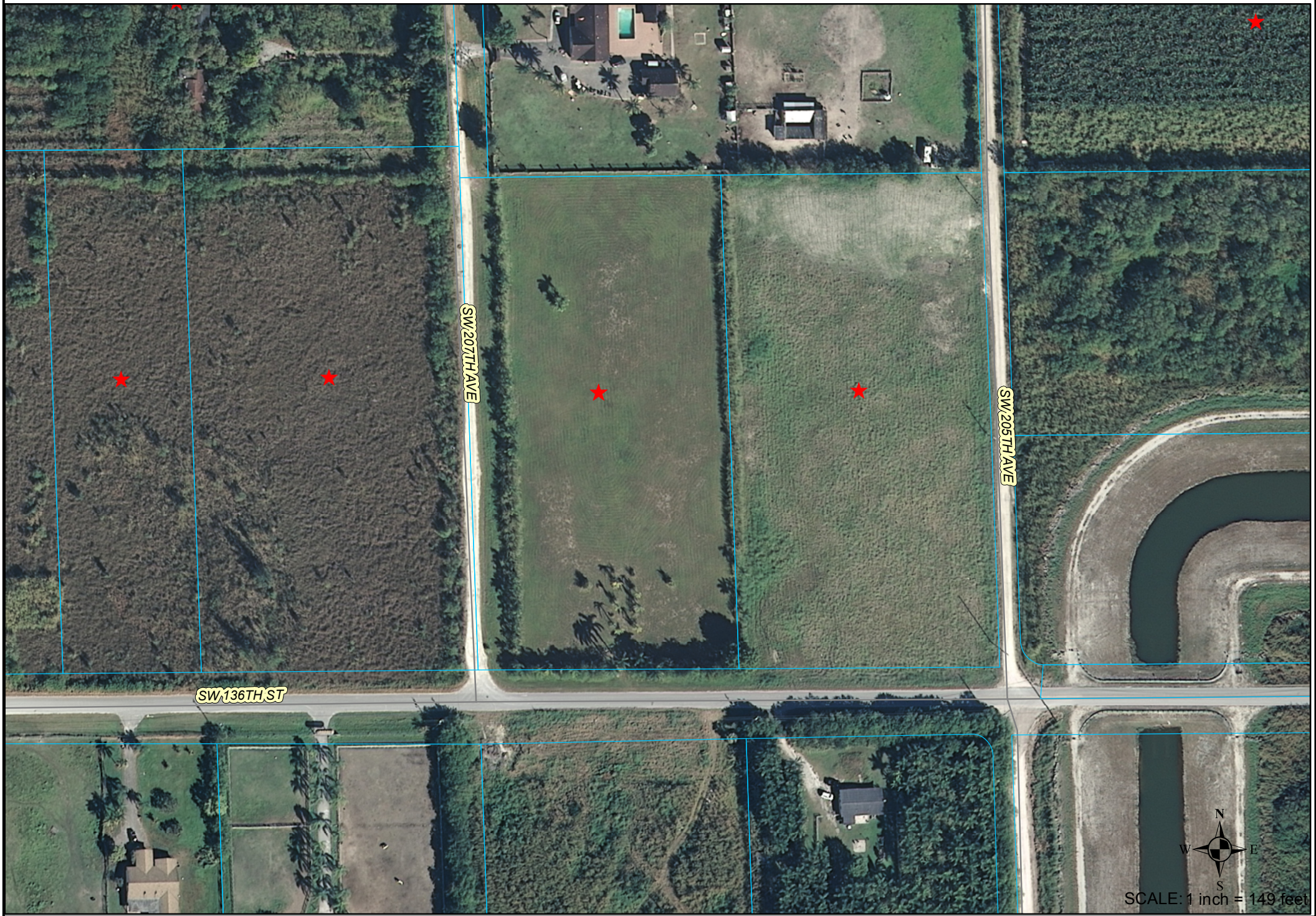
SW207TH AVE

SW205TH AVE



SCALE: 1 inch = 149 feet

2012  
30-5815-000-0816 / CLIV20160079



SW136TH ST

SW207TH AVE

SW205TH AVE



SCALE: 1 inch = 149 feet

2013  
30-5815-000-0816 / CLIV20160079



SW136TH ST

SW207TH AVE

SW205TH AVE



SCALE: 1 inch = 149 feet

2014  
30-5815-000-0816 / CLIV20160079



SW 207TH AVE

SW 205TH AVE

SW 136TH ST



SCALE: 1 inch = 149 feet

2015  
30-5815-000-0816 / CLIV20160079



SCALE: 1 inch = 149 feet

2016  
30-5815-000-0816 / CLIV20160079



SW 207TH AVE

SW 205TH AVE

SW 136TH ST



SCALE: 1 inch = 149 feet

# CLIV20160079-DRON2015, LLC

## Photo Locations

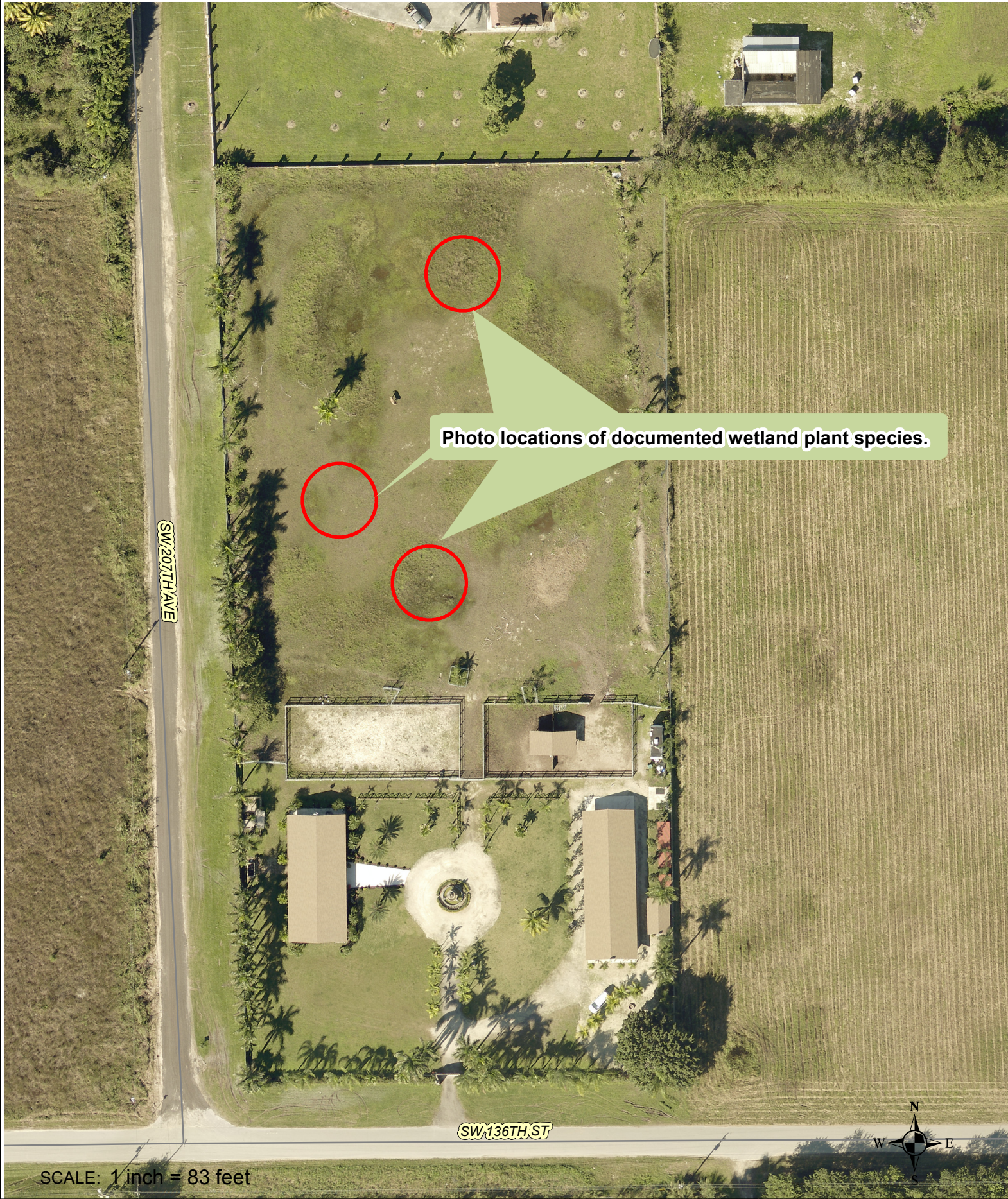


Photo locations of documented wetland plant species.

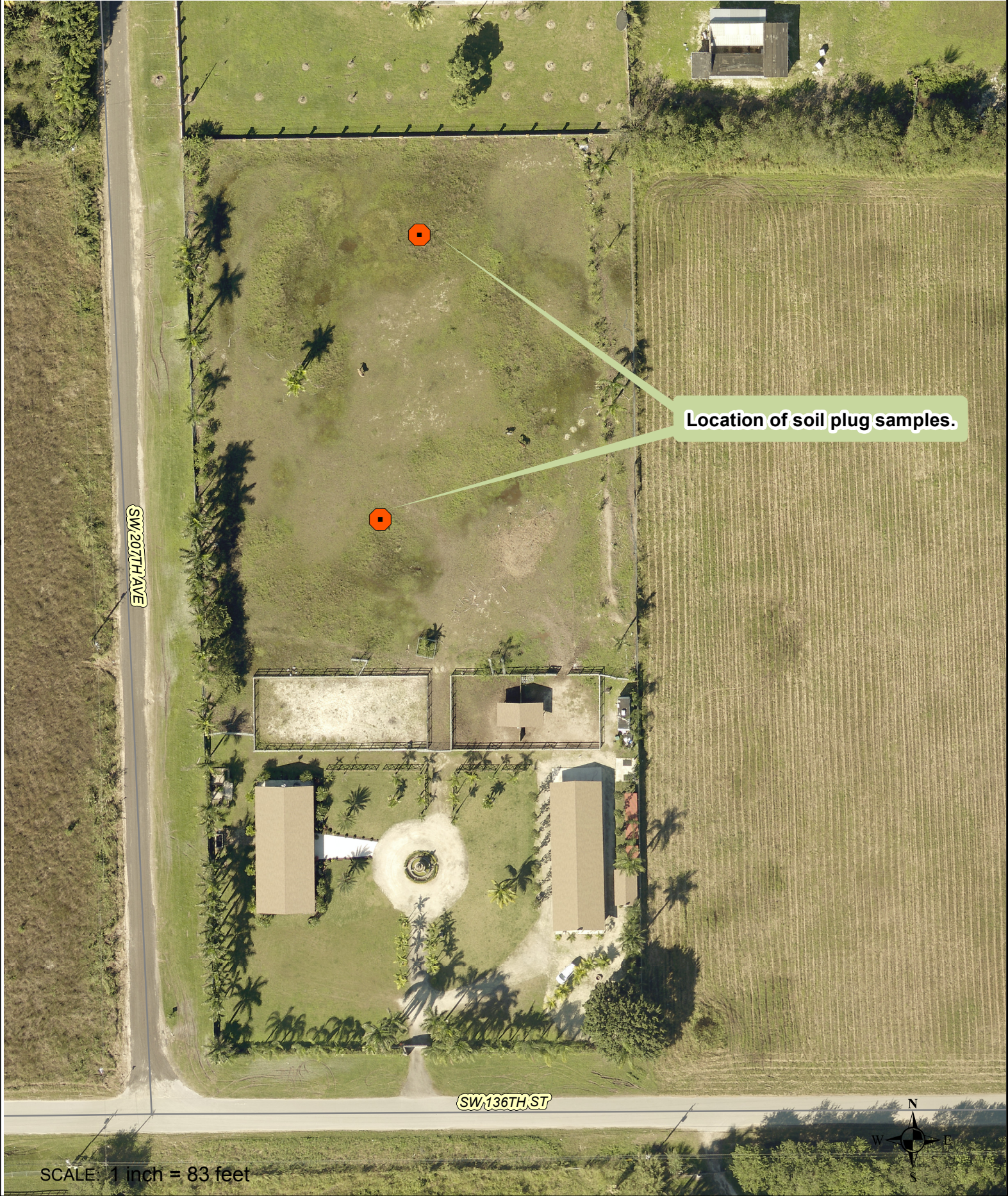
SW 207TH AVE

SW 136TH ST

SCALE: 1 inch = 83 feet

# CLIV20160079-DRON2015, LLC

## Soil Plug Sample Locations



Location of soil plug samples.

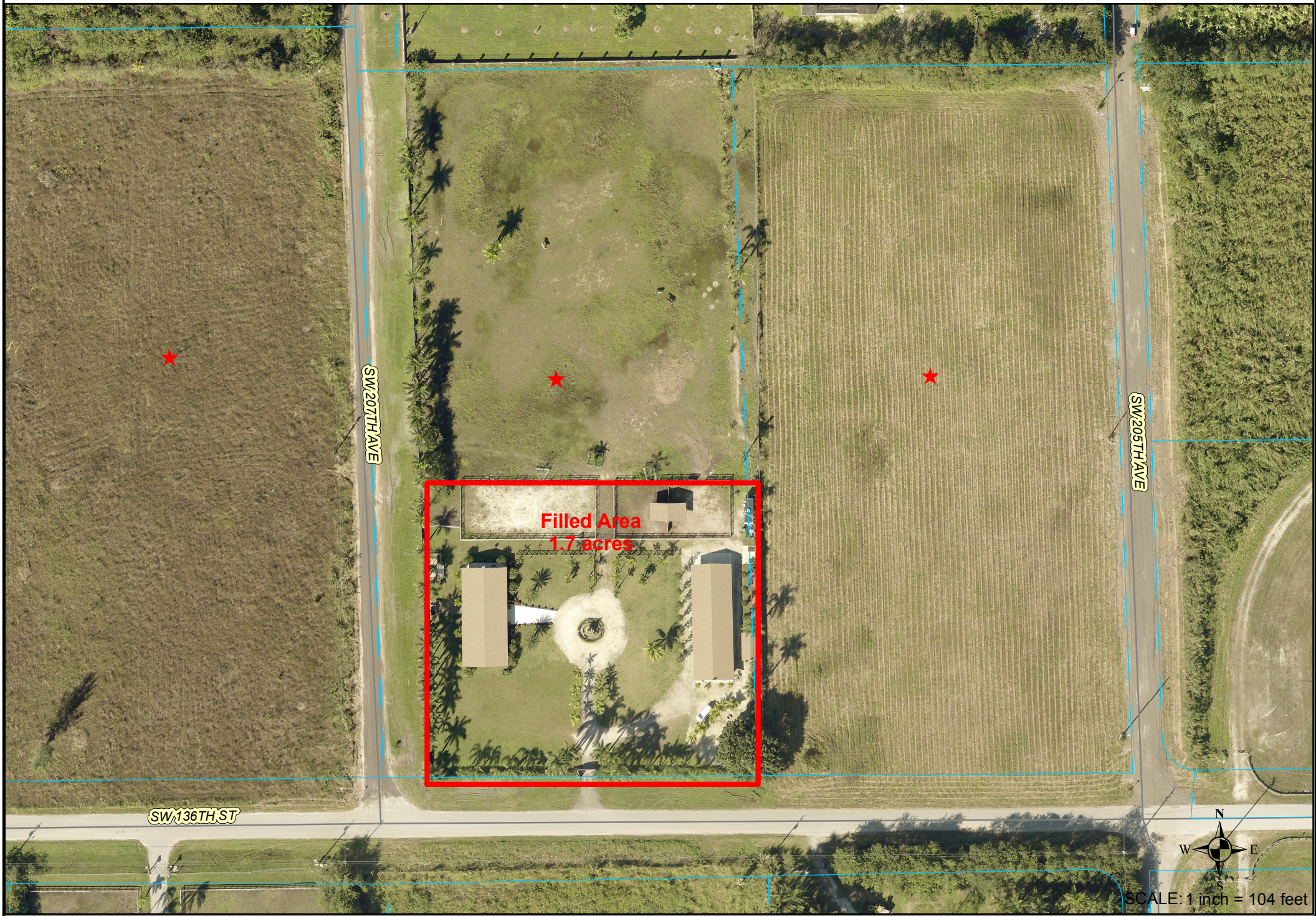
SW 207TH AVE

SW 136TH ST

SCALE: 1 inch = 83 feet

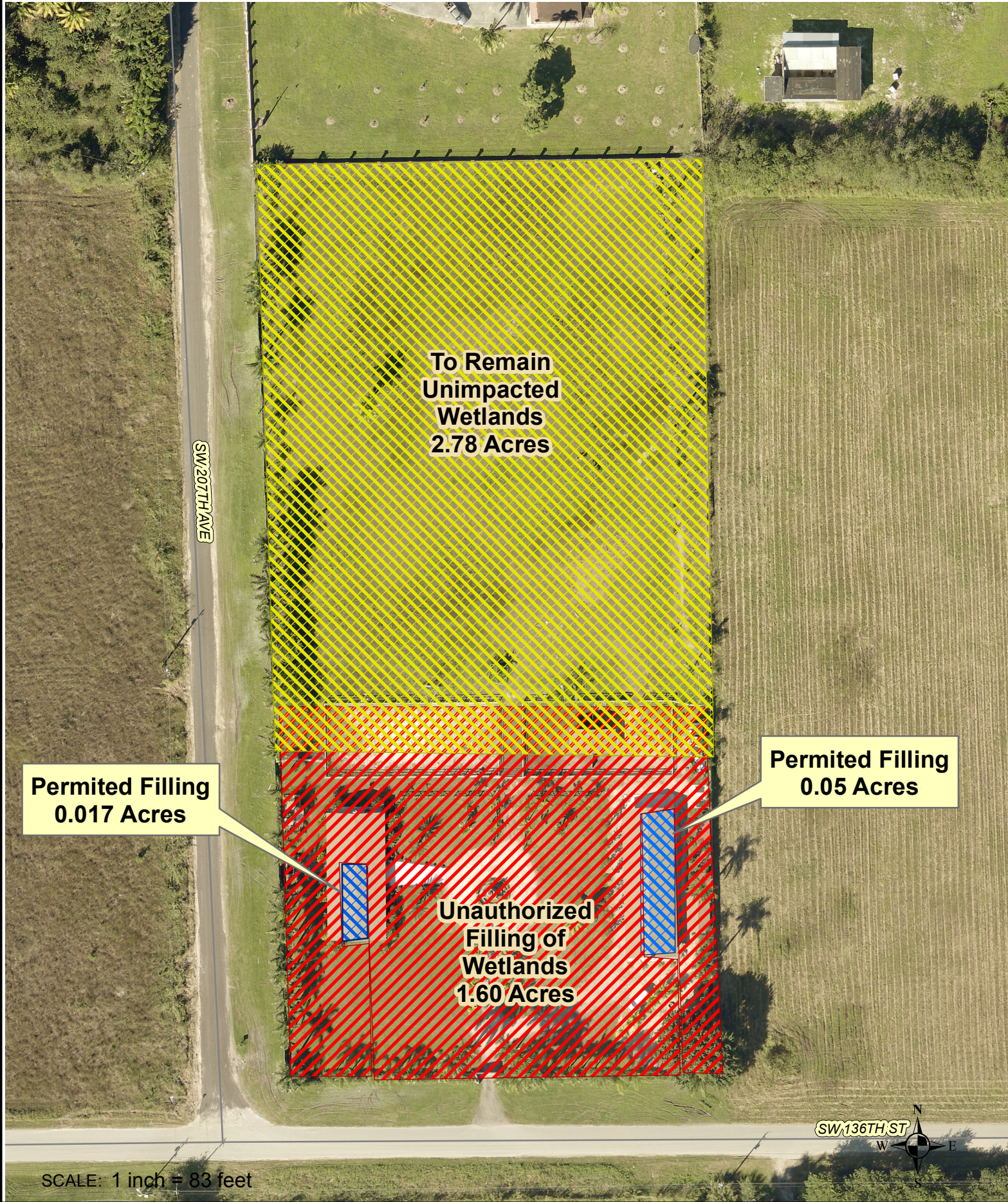


Filled Property Area  
30-5815-000-0816  
CLIV20160079



SCALE: 1 inch = 104 feet

**CLIV20160079-DRON2015, LLC**  
**Permitted / Unauthorized Impact Areas**



**To Remain  
Unimpacted  
Wetlands  
2.78 Acres**

**Permitted Filling  
0.017 Acres**

**Permitted Filling  
0.05 Acres**

**Unauthorized  
Filling of  
Wetlands  
1.60 Acres**

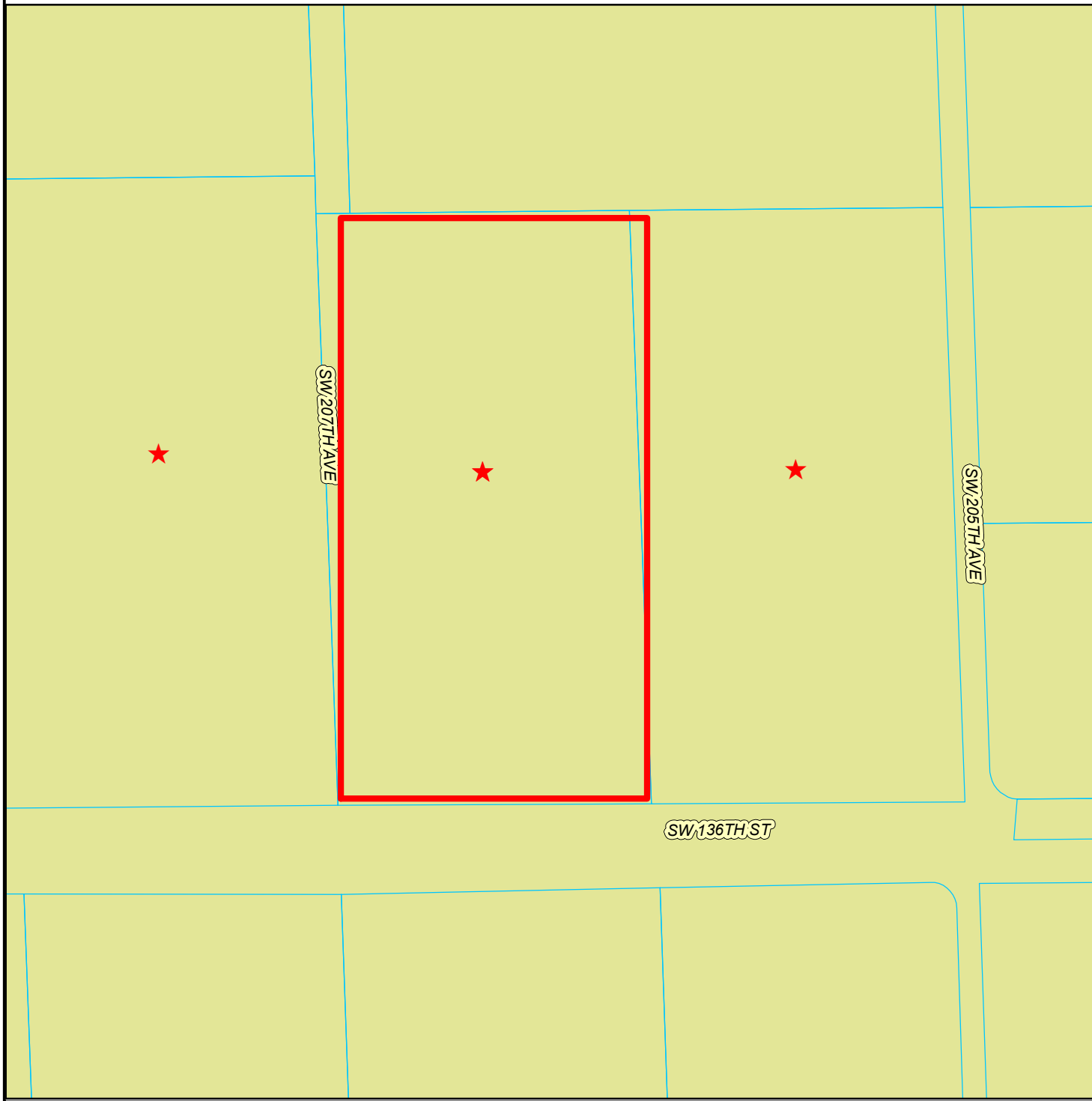
SCALE: 1 inch = 83 feet



# Soil Map

## Chekika Very Gravelly Loam

### 30-5815-000-0816 / CLIV20160079



#### Soils

##### SOILDESC

- BASINGER SAND
- BEACHES
- BISCAYNE GRAVELLY MARL, DRAINED
- BISCAYNE MARL
- BISCAYNE MARL, DRAINED
- BISCAYNE MARL-ROCK OUTCROP COMPLEX
- CANAVERAL SAND
- CARDSOUND SILTY CLAY LOAM-ROCK OUTCROP COMPLEX
- CHEKIKA VERY GRAVELLY LOAM
- DADE FINE SAND
- DANIA MUCK, DEPRESSIONAL
- DEMROY MUCKY SANDY CLAY LOAM-ROCK OUTCROP COMPLEX
- HALLANDALE FINE SAND
- KESSON MUCK, TIDAL
- KROME VERY GRAVELLY LOAM
- LAUDERHILL MUCK, DEPRESSIONAL
- MARGATE FINE SAND
- METECUMBE MUCK
- OPALOCKA SAND-ROCK OUTCROP COMPLEX
- PAHOKEE MUCK, DEPRESSIONAL
- PENNSUCO MARL
- PENNSUCO MARL, DRAINED
- PENNSUCO MARL, TIDAL
- PERRINE MARL
- PERRINE MARL, DRAINED
- PERRINE MARL, TIDAL
- PLANTATION MUCK
- POMELLO SAND
- ROCK OUTCROP-VIZCAYA-BISCAYNE COMPLEX
- ST. AUGUSTINE SAND
- TAMIAMI MUCK, DEPRESSIONAL
- TERRA CEIA MUCK, TIDAL
- UDORTHENTS, LIMESTONE SUBSTRATUM, 2 TO 5 % SLOPES
- UDORTHENTS, LIMESTONE SUBSTRATUM-URBAN LAND COMPLEX
- UDORTHENTS, MARL SUBSTRATUM-URBAN LAND COMPLEX
- UDORTHENTS-WATER COMPLEX
- URBAN LAND
- WATER



SCALE: 1 inch = 149 feet

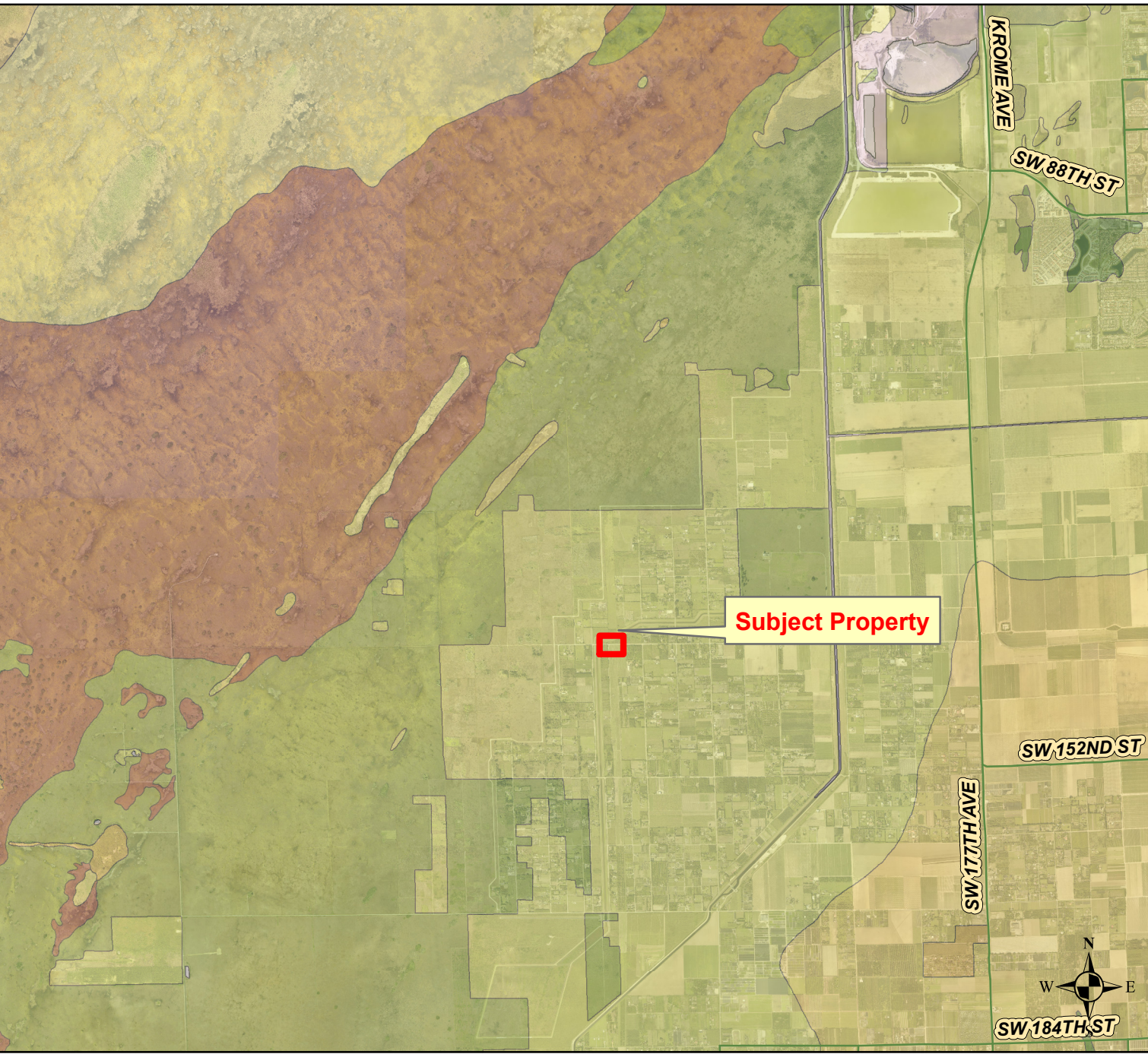
# Soil Map

## Chekika Very Gravelly Loam

30-5815-000-0816 / CLIV20160079

Legend

- Soils**
- | SOILDESC  | Color       |
|---|-------------|
| BASINGER SAND                                       | Light Green |
| BEACHES   | Light Green |
| BISCAYNE GRAVELLY MARL, DRAINED                     | Light Green |
| BISCAYNE MARL                                       | Light Green |
| BISCAYNE MARL, DRAINED                              | Light Green |
| BISCAYNE MARL-ROCK OUTCROP COMPLEX                  | Light Green |
| CANAVERAL SAND                                      | Light Green |
| CARDSOUND SILTY CLAY LOAM-ROCK OUTCROP COMPLEX      | Light Green |
| CHEKIKA VERY GRAVELLY LOAM                          | Light Green |
| DADE FINE SAND                                      | Light Green |
| DANIA MUCK, DEPRESSIONAL                            | Light Green |
| DEMROY MUCKY SANDY CLAY LOAM-ROCK OUTCROP COMPLEX   | Light Green |
| HALLANDALE FINE SAND                                | Light Green |
| KESSON MUCK, TIDAL                                  | Light Green |
| KROME VERY GRAVELLY LOAM                            | Light Green |
| LAUDERHILL MUCK, DEPRESSIONAL                       | Light Green |
| MARGATE FINE SAND                                   | Light Green |
| METECUMBE MUCK                                      | Light Green |
| OPALOCKA SAND-ROCK OUTCROP COMPLEX                  | Light Green |
| PAHOKEE MUCK, DEPRESSIONAL                          | Light Green |
| PENNSUCO MARL                                       | Light Green |
| PENNSUCO MARL, DRAINED                              | Light Green |
| PENNSUCO MARL, TIDAL                                | Light Green |
| PERRINE MARL  | Light Green |
| PERRINE MARL, DRAINED                               | Light Green |
| PERRINE MARL, TIDAL                                 | Light Green |
| PLANTATION MUCK                                     | Light Green |
| POMELLO SAND  | Light Green |
| ROCK OUTCROP-VIZCAYA-BISCAYNE COMPLEX               | Light Green |
| ST. AUGUSTINE SAND                                  | Light Green |
| TAMIAMI MUCK, DEPRESSIONAL                          | Light Green |
| TERRA CEIA MUCK, TIDAL                              | Light Green |
| UDORTHENTS, LIMESTONE SUBSTRATUM, 2 TO 5% SLOPES    | Light Green |
| UDORTHENTS, LIMESTONE SUBSTRATUM-URBAN LAND COMPLEX | Light Green |
| UDORTHENTS, MARL SUBSTRATUM-URBAN LAND COMPLEX      | Light Green |
| UDORTHENTS-WATER COMPLEX                            | Light Green |
| URBAN LAND  | Light Green |
| WATER   | Light Green |



Subject Property



SCALE: 1 inch = 5,731 feet

# Soil Map

## Chekika Very Gravelly Loam

30-5815-000-0816 / CLIV20160079

Legend

**Soils**

**SOILDESC**

- BASINGER SAND
- BEACHES
- BISCAYNE GRAVELLY MARL, DRAINED
- BISCAYNE MARL
- BISCAYNE MARL, DRAINED
- BISCAYNE MARL-ROCK OUTCROP COMPLEX
- CANAVERAL SAND
- CARDSOUND SILTY CLAY LOAM-ROCK OUTCROP COMPLEX
- CHEKIKA VERY GRAVELLY LOAM
- DADE FINE SAND
- DANIA MUCK, DEPRESSIONAL
- DEMROY MUCKY SANDY CLAY LOAM-ROCK OUTCROP COMPLEX
- HALLANDALE FINE SAND
- KESSON MUCK, TIDAL
- KROME VERY GRAVELLY LOAM
- LAUDERHILL MUCK, DEPRESSIONAL
- MARGATE FINE SAND
- METECUMBE MUCK
- OPALOCKA SAND-ROCK OUTCROP COMPLEX
- PAHOKEE MUCK, DEPRESSIONAL
- PENNSUCO MARL
- PENNSUCO MARL, DRAINED
- PENNSUCO MARL, TIDAL
- PERRINE MARL
- PERRINE MARL, DRAINED
- PERRINE MARL, TIDAL
- PLANTATION MUCK
- POMELLO SAND
- ROCK OUTCROP-VIZCAYA-BISCAYNE COMPLEX
- ST. AUGUSTINE SAND
- TAMIAMI MUCK, DEPRESSIONAL
- TERRA CEIA MUCK, TIDAL
- UDORTHENTS, LIMESTONE SUBSTRATUM, 2 TO 5% SLOPES
- UDORTHENTS, LIMESTONE SUBSTRATUM-URBAN LAND COMPLEX
- UDORTHENTS, MARL SUBSTRATUM-URBAN LAND COMPLEX
- UDORTHENTS-WATER COMPLEX
- URBAN LAND
- WATER

SCALE: 1 inch = 430 feet

